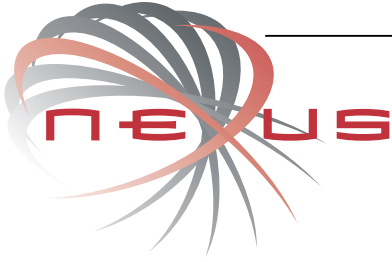


SBUT

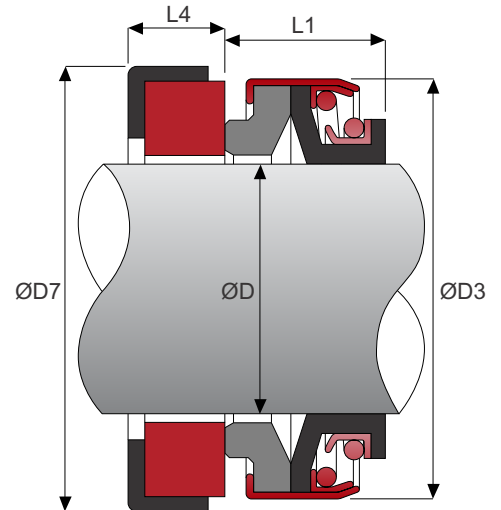
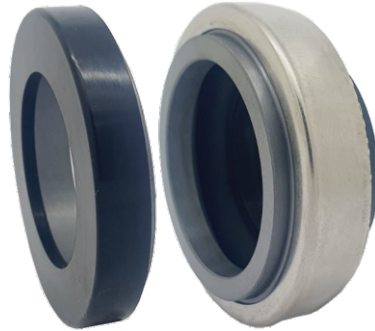


Materials

Stationary - Cer, Sic
 Rotary - Car, Sic
 Elastomer - NBR, EPDM, Vit

Working Conditions

Pressure < 5 bar
 Speed < 10 m/s
 Temperature up to 100°C



Code	ØD	ØD3	ØD7	L1	L4
0060	6	18.0	22.0	11.0	4.0
0080	8	18.0	22.0	11.0	4.0
008A	8	24.0	26.0	11.0	8.0
0100	10	24.0	26.0	13.0	8.0
011A	11	24.0	26.0	13.0	8.0
012A	12	24.0	26.0	13.0	5.5
012B	12	24.0	26.0	13.0	8.0
012C	12	32.0	35.0	13.0	8.0
013A	13	24.0	26.0	13.0	8.0
013B	13	24.0	26.0	11.0	5.5
013D	13	24.0	25.0	16.4	7.8
014A	14	32.0	35.0	13.0	8.0
014B	14	28.0	28.0	13.0	8.0
014C	14	32.0	29.5	13.0	8.0
014D	14	32.0	26.0	13.0	7.5
014E	14	32.0	38.0	13.0	8.0
014F	14	28.0	30.0	13.0	8.0
014P	14	27.5	28.5	13.0	8.0
015C	15	32.0	29.5	13.5	8.0
015P	15	27.5	30.0	13.0	8.0
016A	16	32.0	38.0	13.0	8.0
016B	16	39.0	42.0	13.0	8.0
016C	16	32.0	29.5	13.5	8.0
016E	16	32.0	30.0	13.0	7.0
016P	16	27.5	30.0	13.0	8.0
016S	16	28.0	29.5	13.0	8.0
0170	17	39.0	42.0	13.0	8.0

Code	ØD	ØD3	ØD7	L1	L4
0180	18	39.0	42.0	13.0	8.0
0190	19	39.0	42.0	13.0	8.0
020A	20	39.0	42.0	13.0	8.0
020B	20	42.0	45.0	13.0	10.0
020P	20	35.0	38.0	13.0	8.0
0220	22	42.0	45.0	13.0	10.0
0230	23	47.0	50.0	13.5	10.0
0240	24	47.0	50.0	13.5	10.0
025A	25	47.0	50.0	13.5	10.0
025B	25	42.0	50.0	13.5	10.0
025D	25	42.0	40.0	12.8	6.0
025P	25	42.0	45.0	13.5	10.0
0260	26	47.0	50.0	13.5	10.0
0270	27	47.0	50.0	13.5	10.0
0280	28	54.0	57.0	15.0	10.0
0300	30	54.0	57.0	15.0	10.0
0320	32	54.0	57.0	15.0	10.0
0350	35	60.0	63.0	16.0	10.0
035B	35	60.0	57.0	16.0	10.0
0380	38	65.0	68.0	18.0	12.0
0400	40	65.0	68.0	18.0	12.0
0450	45	70.0	73.0	20.0	12.0
0500	50	85.0	88.0	23.0	15.0
0550	55	85.0	88.0	23.0	15.0
0600	60	105.0	110.0	30.0	15.0
0650	65	105.0	110.0	30.0	15.0
0700	70	105.0	110.0	32.0	15.0