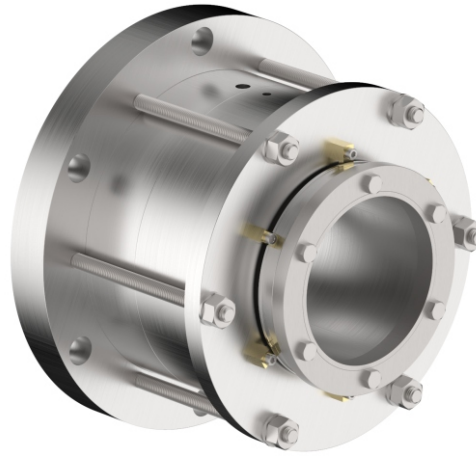


S333



Materials

Stationary - Car, SiC, SSiC, TC

Rotary - SiC, SSiC, TC

Elastomer - NBR, EPDM, Viton, Aflas, FFKM

Working Conditions

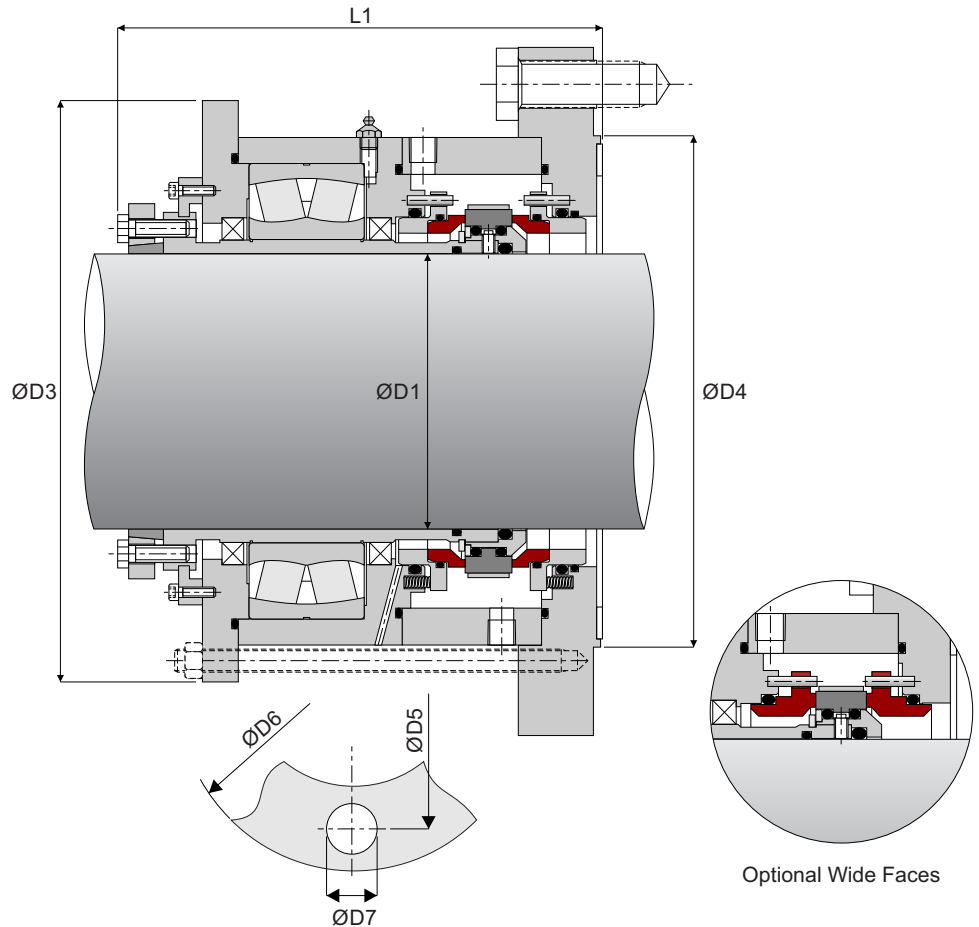
Pressure < 20 bar

Speed < 20 m/s

Temperature < 205°C

Features:

- Double seal - Controlled sealing environment
- 20 bar design pressure - Only limited by PV, not seal construction
- Stationary design - Springs do not rotate
- Springs out of the fluid - No clogging
- Monolithic faces - No inserts
- Reverse pressure balanced
- Large barrier fluid cavity - Increased cooling
- Large stationary holder o-ring - Ease of responding to required movement
- Four simple setting plates slide out of position



ØD1	ØD4	ØD3	ØD5	ØD6	ØD7	L1	No. of Holes	Barrier In/Out
40	110	160	145	177	18	187	4	G 3/8
50	176	178	210	240	18	195	8	G 3/8
60	176	188	210	240	18	197	8	G 3/8
80	204	217	240	280	22	220	8	G 1/2
100	234	234	270	310	22	214	8	G 1/2
125	260	266	295	335	22	255	8	G 1/2
140	313	300	350	390	22	275	12	G 1/2
160	313	310	350	390	22	290	12	G 1/2
180	364	340	400	440	22	295	12	G 1/2
200	364	360	400	440	22	300	12	G 1/2
220	422	380	460	500	22	315	16	G 1/2