

# S141



## Materials

- Stationary - Car / SiC / SSiC / TC
- Rotary - SiC / SSiC / TC
- Elastomer - NBR / EPDM / Viton / Aflas / FFKM

## Working Conditions

- Pressure < 28 bar
- Speed < 25 m/s
- Temperature up to 205°C

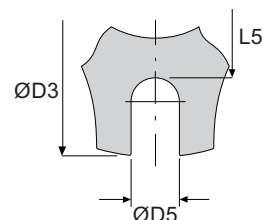
## Features:

- Stationary Design
- Monolithic Faces
- Cushioned Faces
- Pressure balanced
- Springs outside the media

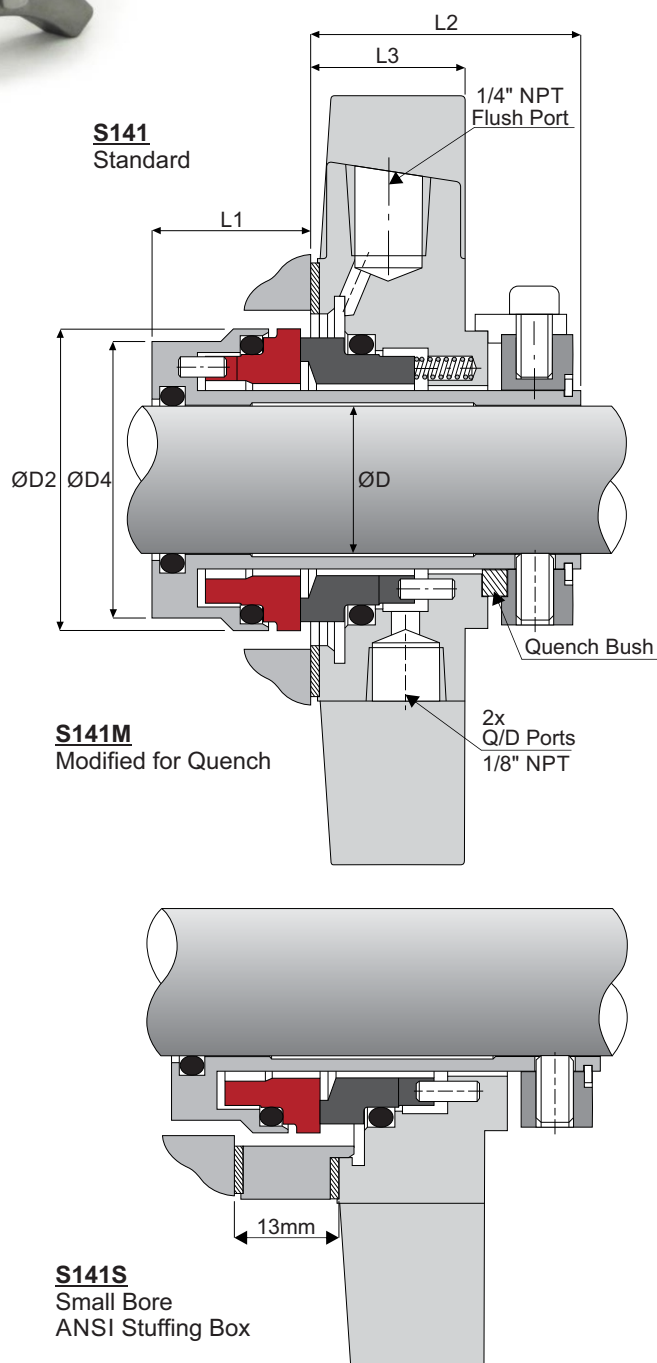


## Gasket Sizes

ID =  $\text{ØD2} + 2.5\text{mm}$   
 OD =  $L5 - 1.5\text{mm}$



Inches ØD	Metric ØD	ØD2	ØD3	ØD4	ØD5	L1	L2	L3	L5	ØD2 S141Z
1.000"	24	43.5	105	40.10	12.5	19.0	38	21.5	62	40.3
	25	43.5	105	40.10	12.5	19.0	38	21.5	62	40.3
1.125"	28	46.5	105	43.10	12.5	19.0	38	21.5	62	43.5
	30	48.5	105	45.10	12.5	19.0	38	21.5	65	46.6
1.250"	32	50.0	105	47.10	12.5	19.0	38	21.5	67	49.8
	33	50.0	105	47.10	12.5	19.0	38	21.5	67	49.8
1.375"	35	53.5	115	50.10	12.5	19.0	38	21.5	70	
1.500"	38	56.5	125	53.10	14.7	19.0	38	21.5	75	
	40	58.5	125	55.10	14.7	19.0	38	21.5	75	
1.625"		60.5	133	57.10	14.7	19.0	38	21.5	80	
	43	61.5	133	58.10	14.7	19.0	38	21.5	80	
1.750"	45	63.5	140	60.10	14.7	19.0	38	21.5	81	
1.875"	48	66.5	140	63.10	14.7	19.0	38	21.5	84	
2.000"	50	68.5	140	65.10	14.7	19.0	38	21.5	86	
2.125"	53	71.5	150	68.10	17.5	19.0	38	21.5	92	
	55	73.5	150	70.10	17.5	19.0	38	21.5	92	
2.250"		76.5	160	73.10	17.5	19.0	38	21.5	100	
2.375"	60	78.5	160	75.10	17.5	19.0	38	21.5	100	
2.500"		81.5	165	78.10	17.5	19.0	38	21.5	109	
	65	83.5	165	80.10	17.5	19.0	38	21.5	109	
2.625"		86.5	165	83.10	17.5	19.0	38	21.5	109	



\*S141Z for small stuffing box cross sections shaft ØD 1.000"-1.375"