



COUPLING FOR PIPE CONNECTION



MJG / MJGL



MJS / MJSL

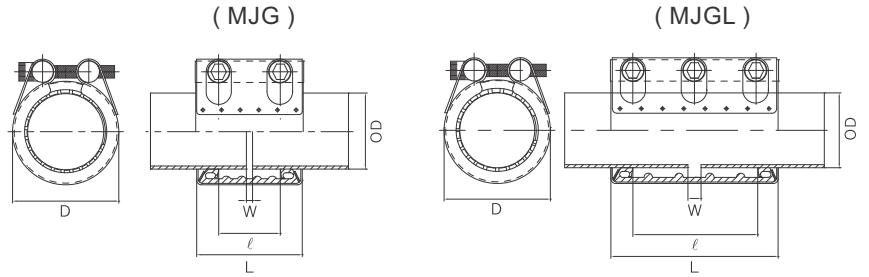
COUPLING FOR PIPE REPAIR



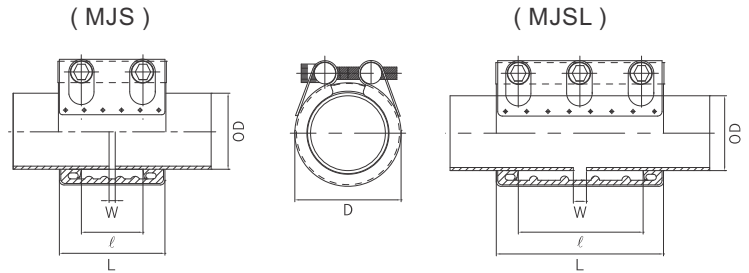
MJH / MJHL



MJD / MJDL



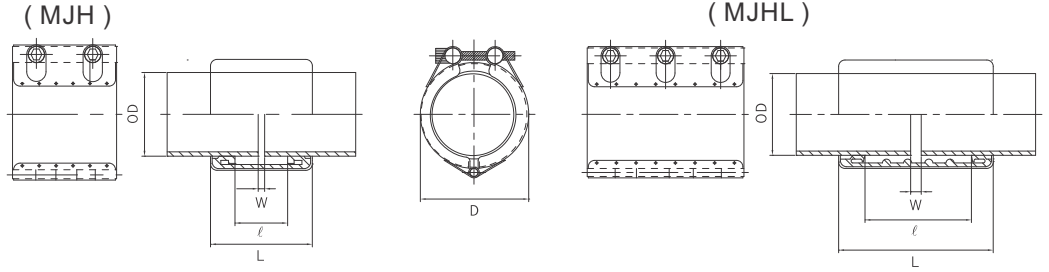
Pipe ND	Pipe OD		D (mm)	Coupling range (mm)	Working pressure (bar)		MJG		MJGL		MJG		MJGL	
	(mm)	(inch)			Ship	Industry	Length (mm)				Torque	Bolt	Torque	Bolt
							L	I	L	I	(Nm)	(M)	(Nm)	(M)
15A	20.0		33.5	19.5 ~ 20.5	16	32	60	28	-	-	7	6	-	-
	21.7	1/2	35.2	21.2 ~ 22.2	16	32	60	28	-	-	7	6	-	-
20A	25.0		38.5	24.5 ~ 25.5	16	32	60	28	100	70	8	8	7	6
	27.2	3/4	40.7	26.7 ~ 27.7	16	32	60	28	100	70	8	8	7	6
	28.2		41.6	27.5 ~ 29.0	16	32	60	28	-	-	8	8	-	-
25A	30.0		43.5	29.5 ~ 30.5	16	32	60	28	-	-	8	8	-	-
	32.0		45.5	31.5 ~ 32.5	16	32	60	28	100	70	8	8	7	6
	34.0	1	47.5	33.0 ~ 34.6	16	32	60	28	100	70	8	8	8	8
32A	38.0		51.5	37.5 ~ 38.5	16	32	60	28	-	-	15	8	-	-
	40.0		53.5	39.5 ~ 41.5	16	32	60	28	100	70	15	8	7	6
	42.7	1 1/4	56.0	41.9 ~ 43.0	16	32	60	28	100	70	15	8	15	8
	44.5		58.0	44.0 ~ 45.0	16	32	60	28	-	-	15	8	-	-
40A	48.6	1 1/2	62.0	47.8 ~ 49.0	16	32	60	28	100	70	15	8	15	8
	50.8		64.5	49.5 ~ 51.5	16	32	60	28	100	70	15	8	7	6
50A	54.0		69.6	53.4 ~ 54.6	16	32	80	44	-	-	18	8	-	-
	57.0		72.6	56.4 ~ 57.6	16	32	80	44	-	-	18	8	-	-
	60.5	2	76.0	59.0 ~ 61.5	16	32	80	44	150	110	18	8	18	8
	63.0		78.6	62.4 ~ 63.6	16	32	80	44	150	110	18	8	18	8
65A	66.7		82.3	65.2 ~ 67.3	14	28	80	44	-	-	18	8	-	-
	69.0		84.6	68.0 ~ 70.1	14	28	80	44	150	110	18	8	18	8
	73.0		88.6	71.5 ~ 74.1	14	28	80	44	150	110	18	8	18	8
	76.3	2 1/2	92.0	75.0 ~ 77.2	14	28	80	44	150	110	18	8	18	8
80A	79.9		101.0	78.8 ~ 80.8	14	28	110	59	200	150	35	12	35	12
	84.0		105.0	83.0 ~ 84.9	14	28	110	59	-	-	35	12	-	-
	89.1	3	110.0	87.8 ~ 91.0	14	28	110	59	200	150	35	12	35	12
90A	101.6		123.0	100.4 ~ 102.6	14	28	110	59	200	150	35	12	35	12
100A	104.0		125.0	103.0 ~ 104.8	14	28	110	59	200	150	35	12	35	12
	106.3		127.3	105.0 ~ 107.4	14	28	110	59	200	150	35	12	35	12
	108.0		129.0	106.5 ~ 108.5	14	28	110	59	200	150	35	12	35	12
	114.3	4	135.3	113.2 ~ 115.4	14	28	110	59	200	150	35	12	35	12



Pipe ND	Pipe OD		D (mm)	Coupling range (mm)	Working pressure (bar)		MJS		MJSL		MJS		MJSL	
	(mm)	(inch)			Ship	Industry	Length (mm)		Torque (Nm)	Bolt (M)	Torque (Nm)	Bolt (M)		
							L	l					L	l
15A	20.0		32.0	19.5 ~ 20.5	16	32	60	28	-	-	7	6	-	-
	21.7	1/2	33.7	21.0 ~ 22.0	16	32	60	28	-	-	7	6	-	-
20A	25.0		38.1	24.0 ~ 26.0	16	32	60	28	-	-	7	8	-	-
	27.2	3/4	40.3	26.0 ~ 28.0	16	32	60	28	100	70	7	8	7	6
	28.2		41.3	26.4 ~ 29.0	16	32	60	28	-	-	7	8	-	-
25A	30.0		43.1	29.0 ~ 31.0	16	32	60	28	-	-	7	8	-	-
	32.0		45.1	31.0 ~ 33.0	16	32	60	28	100	70	7	8	7	6
	34.0	1	47.1	33.0 ~ 35.0	16	32	60	28	100	70	7	8	7	8
32A	38.0		51.1	37.0 ~ 39.0	16	32	60	28	-	-	7	8	-	-
	40.0		53.1	39.5 ~ 41.3	16	32	60	28	100	70	7	8	7	6
	42.7	1 1/4	55.8	42.0 ~ 44.0	16	32	60	28	100	70	7	8	7	8
	44.5		57.6	44.0 ~ 46.0	16	32	60	28	-	-	7	8	-	-
40A	48.6	1 1/2	61.7	47.5 ~ 49.5	16	32	60	28	100	70	7	8	7	8
	50.8		63.9	49.2 ~ 51.5	16	32	60	28	100	70	7	8	7	6
50A	54.0		70.0	53.0 ~ 55.0	16	32	80	44	-	-	12	8	-	-
	57.0		73.0	56.0 ~ 58.0	16	32	80	44	-	-	12	8	-	-
	60.5	2	76.5	59.0 ~ 61.5	16	32	80	44	150	110	12	8	12	8
	63.0		79.0	62.0 ~ 64.0	16	32	80	44	150	110	12	8	12	8
65A	66.7		82.7	65.4 ~ 68.3	14	28	80	44	-	-	12	8	-	-
	69.0		85.0	68.5 ~ 71.0	14	28	80	44	150	110	12	8	12	8
	73.0		89.0	72.5 ~ 75.5	14	28	80	44	150	110	12	8	12	8
	76.3	2 1/2	92.3	75.0 ~ 78.0	14	28	80	44	150	110	12	8	12	8
	80A	79.9		99.9	78.8 ~ 82.0	14	28	110	59	200	110	15	12	15
	84.0		104.0	82.5 ~ 85.5	14	28	110	59	-	-	15	12	-	-
	89.1	3	109.1	88.0 ~ 91.0	14	28	110	59	200	150	15	12	15	12
90A	101.6		121.6	100.0 ~ 103.0	14	28	110	59	200	150	15	12	15	12



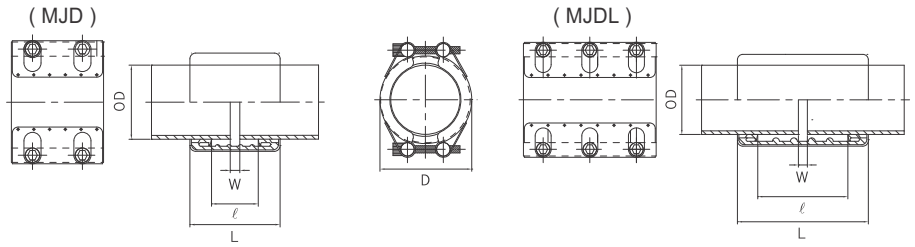
Pipe ND	Pipe OD		D (mm)	Coupling range (mm)	Working pressure (bar)		MJS		MJSL		MJS		MJSL	
	(mm)	(inch)			Ship	Industry	Length (mm)				Torque	Bolt	Torque	Bolt
							L	I	L	I	(Nm)	(M)	(Nm)	(M)
100A	104.0		124.0	102.0 ~ 105.0	14	28	110	59	200	150	15	12	15	12
	106.3		126.3	105.0 ~ 107.5	14	28	110	59	200	150	15	12	15	12
	108.0		128.0	106.0 ~ 109.0	14	28	110	59	200	150	15	12	15	12
	114.3	4	134.3	113.0 ~ 116.0	14	28	110	59	200	150	15	12	15	12
125A	127.0		148.5	125.0 ~ 129.0	14	28	111	59	-	-	25	12	-	-
	129.0		150.5	127.5 ~ 130.0	14	28	111	59	-	-	25	12	-	-
	133.0		154.5	131.0 ~ 135.0	14	28	111	59	-	-	25	12	-	-
	139.8	5	161.3	138.0 ~ 142.0	14	28	111	59	201	150	25	12	25	12
	141.3		162.8	139.5 ~ 143.5	14	28	111	59	201	150	25	12	25	12
150A	154.0		175.5	151.5 ~ 155.5	12	24	111	59	-	-	25	12	-	-
	159.0		180.5	156.0 ~ 160.0	12	24	111	59	201	150	25	12	25	12
	165.2	6	186.7	164.0 ~ 167.0	12	24	111	59	201	150	25	12	25	12
	168.3		189.8	166.0 ~ 170.0	12	24	111	59	201	150	25	12	25	12
175A	180.0		201.5	178.0 ~ 182.0	10	20	111	59	-	-	30	12	-	-
200A	200.0		225.5	198.0 ~ 203.0	8	16	150	89	-	-	35	14	-	-
	204.0		229.5	202.0 ~ 206.0	8	16	150	89	-	-	35	14	-	-
	216.3	8	241.8	214.0 ~ 218.5	8	16	150	89	250	185	35	14	35	16
	219.1		244.6	216.5 ~ 221.5	8	16	150	89	250	185	35	14	35	16
250A	254.0		279.5	251.0 ~ 257.0	8	16	150	89	-	-	35	14	-	-
	267.4	10	292.9	262.0 ~ 269.0	8	16	150	89	250	185	35	14	35	16
	273.1		298.6	270.0 ~ 276.0	8	16	150	89	250	185	35	14	35	16
300A	304.0		329.5	301.5 ~ 308.0	7	14	150	89	-	-	35	14	-	-
	318.5	12	344.0	316.0 ~ 322.5	7	14	150	89	250	185	35	14	35	16
	323.9		349.4	322.0 ~ 328.0	7	14	150	89	250	185	35	14	35	16
350A	355.6	14	381.1	352.0 ~ 360.0	7	14	150	89	250	185	45	14	45	16
400A	406.4	16	431.9	402.0 ~ 410.0	6	12	150	89	250	185	45	14	45	16



Pipe ND	Pipe OD		D (mm)	Coupling range (mm)	Working pressure (bar)		MJH		MJHL		MJH		MJHL	
	(mm)	(inch)			Ship	Industry	Length (mm)				Torque	Bolt	Torque	Bolt
							L	I	L	I	(Nm)	(M)	(Nm)	(M)
15A	20.0		33.1	19.5 ~ 20.5	16	32	60	28	-	-	5	6	-	-
	21.7	1/2	34.8	21.0 ~ 22.0	16	32	60	28	-	-	5	6	-	-
20A	25.0		38.1	24.0 ~ 26.0	16	32	60	28	-	-	7	6	-	-
	27.2	3/4	40.3	26.0 ~ 28.0	16	32	60	28	-	-	7	6	-	-
	28.2		41.3	26.4 ~ 29.0	16	32	60	28	-	-	7	6	-	-
25A	30.0		43.1	29.0 ~ 31.0	16	32	60	28	-	-	7	6	-	-
	32.0		45.1	31.0 ~ 33.0	16	32	60	28	100	70	7	6	7	6
	34.0	1	47.1	33.0 ~ 35.0	16	32	60	28	100	70	7	6	7	6
32A	38.0		51.1	37.0 ~ 39.0	16	32	60	28	-	-	7	8	-	-
	40.0		53.1	39.5 ~ 41.3	16	32	60	28	-	-	7	8	-	-
	42.7	1 1/4	55.8	42.0 ~ 44.0	16	32	60	28	100	70	7	8	7	6
	44.5		57.6	44.0 ~ 46.0	16	32	60	28	-	-	7	8	-	-
40A	48.6	1 1/2	61.7	47.5 ~ 49.5	16	32	60	28	100	70	7	8	7	6
	50.8		63.9	49.2 ~ 51.5	16	32	60	28	100	70	7	8	7	6
50A	54.0		70.0	53.0 ~ 55.0	16	32	80	44	-	-	12	8	-	-
	57.0		73.0	56.0 ~ 58.0	16	32	80	44	-	-	12	8	-	-
	60.5	2	76.5	59.0 ~ 61.5	16	32	80	44	150	110	12	8	12	8
	63.0		79.0	62.0 ~ 64.0	16	32	80	44	150	110	12	8	12	8
65A	66.7		82.7	65.4 ~ 68.3	14	28	80	44	-	-	12	8	-	-
	69.0		85.0	68.5 ~ 71.0	14	28	80	44	150	110	12	8	12	8
	73.0		89.0	72.5 ~ 75.5	14	28	80	44	150	110	12	8	12	8
	76.3	2 1/2	92.3	75.0 ~ 78.0	14	28	80	44	150	110	12	8	12	8
80A	79.9		99.9	78.8 ~ 82.0	14	28	110	59	200	150	30	12	30	12
	84.0		104.0	82.5 ~ 85.5	14	28	110	59	-	-	30	12	-	-
	89.1	3	109.1	88.0 ~ 91.0	14	28	110	59	200	150	30	12	30	12
90A	101.6		121.6	100.0 ~ 103.0	14	28	110	59	200	150	30	12	30	12



Pipe ND	Pipe OD		D (mm)	Coupling range (mm)	Working pressure (bar)		MJH		MJHL		MJH		MJHL	
	(mm)	(inch)			Ship	Industry	Length (mm)				Torque	Bolt	Torque	Bolt
							L	I	L	I	(Nm)	(M)	(Nm)	(M)
100A	104.0		124.0	102.0 ~ 105.0	14	28	110	59	200	150	40	12	40	12
	106.3		126.3	105.0 ~ 107.5	14	28	110	59	200	150	40	12	40	12
	108.0		128.0	106.0 ~ 109.0	14	28	110	59	200	150	40	12	40	12
	114.3	4	134.3	113.0 ~ 116.0	14	28	110	59	200	150	40	12	40	12
125A	127.0		148.5	125.0 ~ 129.0	14	28	111	59	-	-	40	12	-	-
	129.0		150.5	127.5 ~ 130.0	14	28	111	59	-	-	40	12	-	-
	133.0		154.5	131.0 ~ 135.0	14	28	111	59	-	-	40	12	-	-
	139.8	5	161.3	138.0 ~ 142.0	14	28	111	59	201	150	40	12	40	12
	141.3		162.8	139.5 ~ 143.5	14	28	111	59	201	150	40	12	40	12
150A	154.0		175.5	151.5 ~ 155.5	12	24	111	59	-	-	40	12	-	-
	159.0		180.5	156.0 ~ 160.0	12	24	111	59	201	150	40	12	40	12
	165.2	6	186.7	164.0 ~ 167.0	12	24	111	59	201	150	40	12	40	12
	168.3		189.8	166.0 ~ 170.0	12	24	111	59	201	150	40	12	40	12
175A	180.0		201.5	178.0 ~ 182.0	10	20	111	59	-	-	45	12	-	-
200A	200.0		225.5	198.0 ~ 203.0	8	16	150	89	-	-	60	14	-	-
	204.0		229.5	202.0 ~ 206.0	8	16	150	89	-	-	60	14	-	-
	216.3	8	241.8	214.0 ~ 218.5	8	16	150	89	250	185	60	14	60	16
	219.1		244.6	216.5 ~ 221.5	8	16	150	89	250	185	60	14	60	16
250A	254.0		279.5	251.0 ~ 257.0	8	16	150	89	-	-	60	14	-	-
	267.4	10	292.9	262.0 ~ 269.0	8	16	150	89	250	185	60	14	60	16
	273.1		298.6	270.0 ~ 276.0	8	16	150	89	250	185	60	14	60	16
300A	304.0		329.5	301.5 ~ 308.0	7	14	150	89	-	-	60	14	-	-
	318.5	12	344.0	316.0 ~ 322.5	7	14	150	89	250	185	60	14	60	16
	323.9		349.4	322.0 ~ 328.0	7	14	150	89	250	185	60	14	60	16
350A	355.6	14	381.1	352.0 ~ 360.0	7	14	150	89	-	-	75	14	-	-
400A	406.4	16	431.9	402.0 ~ 410.0	6	12	150	89	-	-	75	14	-	-



Pipe ND	Pipe OD		D (mm)	Coupling range (mm)	Working pressure (bar)		MJD		MJDL		MJD		MJDL	
	(mm)	(inch)			Ship	Industry	Length (mm)		Torque (Nm)	Bolt (M)	Torque (Nm)	Bolt (M)		
							L	I					L	I
13A	15.8		28.9	15.3~17.0	16	32	60	28	-	-	7	6	-	-
15A	20.0		33.1	19.5 ~ 21.3	16	32	60	28	100	70	7	6	7	6
	21.7	1/2	34.8	21.0 ~ 23.0	16	32	60	28	100	70	7	6	7	6
20A	25.0		38.1	24.0 ~ 26.5	16	32	60	28	100	70	7	6	7	6
	27.2	3/4	40.3	26.0 ~ 28.5	16	32	60	28	100	70	7	6	7	6
	28.2		41.3	26.4 ~ 29.5	16	32	60	28	-	-	7	6	-	-
25A	30.0		43.1	29.0 ~ 31.5	16	32	60	28	-	-	7	6	-	-
	32.0		45.1	31.0 ~ 33.5	16	32	60	28	100	70	7	6	7	6
	34.0	1	47.1	33.0 ~ 35.5	16	32	60	28	100	70	7	6	7	6
32A	38.0		51.1	37.0 ~ 39.5	16	32	60	28	-	-	7	6	-	-
	40.0		53.1	39.5 ~ 41.8	16	32	60	28	100	70	7	6	7	6
	42.7	1 1/4	55.8	42.0 ~ 44.5	16	32	60	28	100	70	7	6	7	6
	44.5		57.6	44.0 ~ 46.5	16	32	60	28	-	-	7	6	-	-
40A	48.6	1 1/2	61.7	47.5 ~ 50.5	16	32	60	28	100	70	7	6	7	6
	50.8		63.9	49.2 ~ 51.5	16	32	60	28	100	70	7	6	7	6
50A	54.0		70.0	53.0 ~ 56.0	16	32	80	44	-	-	12	8	-	-
	57.0		73.0	56.0 ~ 59.0	16	32	80	44	-	-	12	8	-	-
	60.5	2	76.5	59.0 ~ 62.0	16	32	80	44	150	110	12	8	18	8
	63.0		79.0	62.0 ~ 65.0	16	32	80	44	150	110	12	8	18	8
65A	66.7		82.7	65.4 ~ 69.0	14	28	80	44	-	-	-	-	-	-
	69.0		85.0	68.5 ~ 72.0	14	28	80	44	150	110	12	8	12	8
	73.0		89.0	72.5 ~ 76.5	14	28	80	44	150	110	12	8	12	8
	76.3	2 1/2	92.3	75.0 ~ 79.0	14	28	80	44	150	110	12	8	12	8
80A	79.9		99.9	78.8 ~ 83.0	14	28	110	59	-	-	15	8	-	-
	84.0		104.0	82.5 ~ 86.0	14	28	110	59	-	-	15	8	-	-
	89.1	3	109.1	88.0 ~ 92.0	14	28	110	59	200	150	15	12	15	12
90A	101.6		121.6	100.0 ~ 104.0	14	28	110	59	200	150	15	12	15	12



Pipe ND	Pipe OD		D (mm)	Coupling range (mm)	Working pressure (bar)		MJD		MJDL		MJD		MJDL	
	(mm)	(inch)			Ship	Industry	Length (mm)				Torque	Bolt	Torque	Bolt
							L	I	L	I	(Nm)	(M)	(Nm)	(M)
100A	104.0		124.0	102.0 ~ 106.0	14	28	110	59	200	150	15	12	15	12
	106.3		126.3	105.0 ~ 108.5	14	28	110	59	200	150	15	12	15	12
	108.0		128.0	106.0 ~ 110.0	14	28	110	59	200	150	15	12	15	12
	114.3	4	134.3	113.0 ~ 118.0	14	28	110	59	200	150	15	12	15	12
125A	127.0		148.5	125.0 ~ 129.5	14	28	111	59	-	-	25	12	-	-
	129.0		150.5	127.5 ~ 131.0	14	28	111	59	-	-	25	12	-	-
	133.0		154.5	131.0 ~ 135.5	14	28	111	59	-	-	25	12	-	-
	139.8	5	161.3	138.0 ~ 142.5	14	28	111	59	201	150	25	12	25	12
	141.3		162.8	139.5 ~ 144.0	14	28	111	59	201	150	25	12	25	12
150A	154.0		175.5	151.5 ~ 156.0	12	24	111	59	-	-	25	12	-	-
	159.0		180.5	156.0 ~ 161.0	12	24	111	59	201	150	25	12	25	12
	165.2	6	186.7	164.0 ~ 168.5	12	24	111	59	201	150	25	12	25	12
	168.3		189.8	166.0 ~ 170.5	12	24	111	59	201	150	25	12	25	12
175A	180.0		201.5	178.0 ~ 183.0	10	20	111	59	-	-	30	12	-	-
200A	200.0		225.5	198.0 ~ 203.5	8	16	150	89	-	-	45	14	-	-
	204.0		229.5	202.0 ~ 206.5	8	16	150	89	-	-	45	14	-	-
	216.3	8	241.8	214.0 ~ 219.0	8	16	150	89	250	185	45	14	45	16
	219.1		244.6	216.5 ~ 222.0	8	16	150	89	250	185	45	14	45	16
250A	254.0		279.5	251.0 ~ 257.0	8	16	150	89	-	-	45	14	-	-
	267.4	10	292.9	262.0 ~ 270.0	8	16	150	89	250	185	45	14	45	16
	273.1		298.6	270.0 ~ 277.0	8	16	150	89	250	185	45	14	45	16
300A	304.0		329.5	301.5 ~ 309.0	7	14	150	89	-	-	75	14	-	-
	318.5	12	344.0	316.0 ~ 323.0	7	14	150	89	250	185	75	14	75	16
	323.9		349.4	322.0 ~ 329.0	7	14	150	89	250	185	75	14	75	16
350A	355.6	14	381.1	352.0 ~ 361.0	7	14	150	89	250	185	75	14	75	16
400A	406.4	16	431.9	402.0 ~ 411.0	6	12	150	89	250	185	75	14	75	16
450A	457.2	18	482.7	453.0 ~ 462.0	6	12	150	89	250	185	90	14	90	16
500A	508.0	20	533.5	504.0 ~ 513.0	5	10	150	89	250	185	90	14	90	16
550A	558.8	22	584.3	554.0 ~ 564.0	4.6	9.2	150	89	250	185	90	14	90	16
600A	609.6	24	635.1	605.0 ~ 615.0	4.2	8.4	150	89	250	185	90	14	90	16
650A	660.4	26	685.9	654.0 ~ 666.0	-	8	150	89	250	185	90	14	90	16
700A	711.2	28	736.7	705.0 ~ 717.0	-	7.4	150	89	250	185	90	14	90	16
750A	762.0	30	787.5	756.0 ~ 768.0	-	7.2	150	89	250	185	90	14	90	16
800A	812.8	32	838.3	806.0 ~ 818.0	-	6.8	150	89	250	185	90	14	90	16
850A	863.6	34	889.1	857.0 ~ 869.0	-	6.4	150	89	250	185	90	14	90	16
900A	914.4	36	939.9	908.0 ~ 920.0	-	6	150	89	250	185	90	14	90	16
1000A	1016.0	40	1041.5	1010.0 ~ 1022.0	-	5.4	150	89	250	185	90	14	90	16